

AutoScan-DS-MIX

More Than Details
High-end implant and veneer applications



INTELLiDENT

by PROSCAN

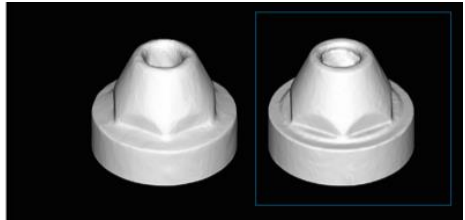
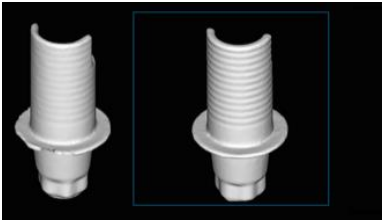
AutoScan-DS-MIX is a high-end dental 3D scanner developed by SHINING 3D.

With open design and modular structure, AutoScan-DS-MIX features fine details, high accuracy and high efficiency to fulfill users' demands of a wide range of dental applications including crown&bridge, implant, bar, etc.

Ultra-fine Details

Thanks to **dual 5.0 MP high** resolution cameras, AutoScan-DS-MIX can perfectly capture edge lines of abutments and features of scan bodies.

2*1.3MP vs. 2*5.0MP



High Accuracy

Scan accuracy $\leq 7\mu\text{m}$ assures reliable scan result.



DENTICIANS FOR PROFESSIONALS

Eikenenweg 71, 3520 Zonhoven, Belgium / +32 11 151 150 / info@intellident.be / intellident.be / BTW: BE 0899.775.364





INTELLiDENT

by PROSCAN

High Efficiency

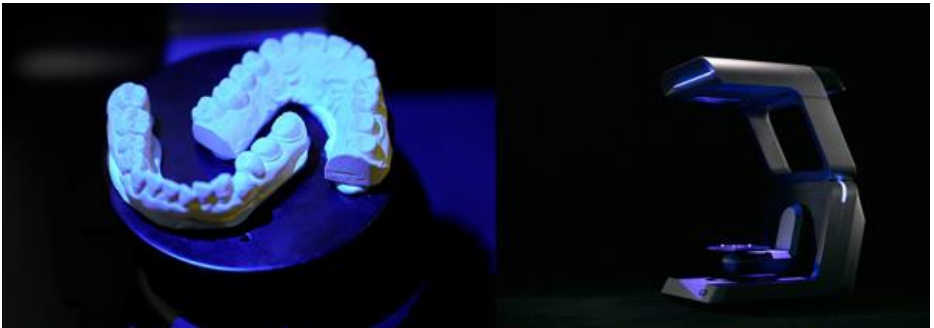
AutoScan-DS-MIX supports high efficiency scan mode: 13 seconds for scanning a full arch.

With All-in-one scan it can improve scan efficiency by approx. 30%.

			
Bite	Single Jaw	1-4Dies/5-8Dies	Impression
6s	13s	18 / 33s	32s

All-in-one Scan

Non-separated full jaws scan improves scan process efficiency by approx. 30%.

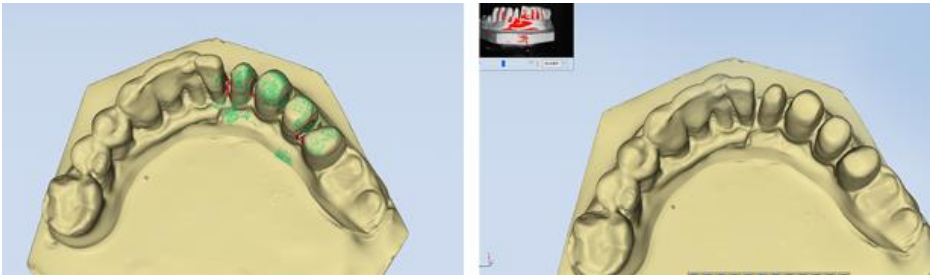


DENTICIANS FOR PROFESSIONALS

Eikenenweg 71, 3520 Zonhoven, Belgium / +32 11 151 150 / info@intellident.be / intellident.be / BTW: BE 0899.775.364

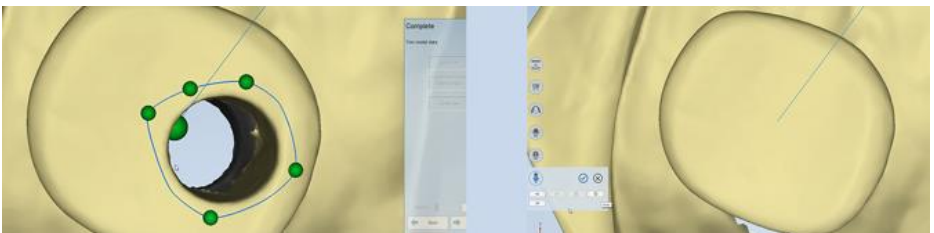
Intelligent Add-Scan

With the scan software supporting automatic detection of unscanned surfaces and automatic add-scan, AutoScan-DS-MIX offers intuitive user experience.



Screw Channel Sealing

Users can seal the screw channel in the scan software, which optimizes the scan workflow.

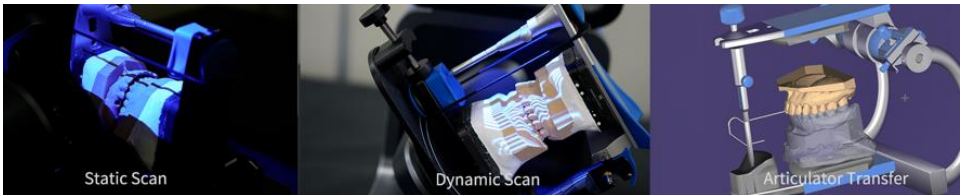


INTEllIDENT

by PROSCAN

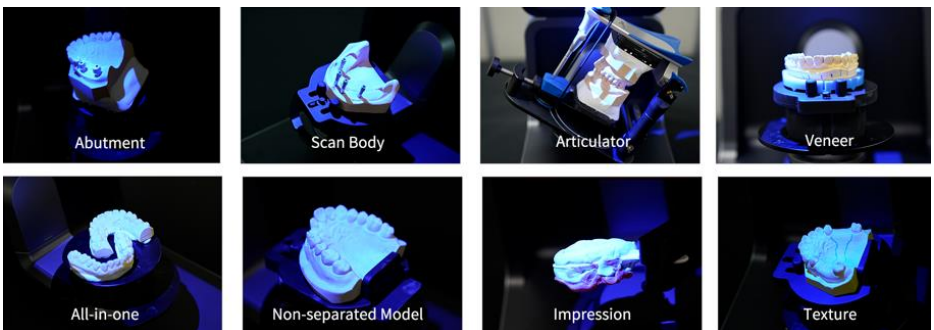
Flexible Articulator Scan

AutoScan-DS-MIX supports not only dynamic and static two scan modes for most common articulators, but also supports articulator transfer for Artex, Kavo, SAM and Bio-Art articulators.



Versatile Applications

With exceptional scan performance, AutoScan-DS-MIX supports versatile dental scan applications, inc. abutment, scan body, articulator, all-in-one, impression, texture, etc.



DENTICIANS FOR PROFESSIONALS

Eikenenweg 71, 3520 Zonhoven, Belgium / +32 11 151 150 / info@intellident.be / intellident.be / BTW: BE 0899.775.364

Technical Specifications

Model:	AUTOSCAN-DS-MIX
Camera Resolution:	2x5.0 MP cameras
Accuracy:	≤7μm (ISO12836)
Scan Time:	6s for bite scan
	13s for upper/lower jaw scan
	18s for 1-4 dies scan
	33s for 5-8 dies scan
	32s for impression scan
Articulator Scan:	Dynamic/ static, duupport articulator transfer
Output Format:	STL, PLY
Light Source:	Blue Light
Dimension:	238(L) x 340(W) x 447(H) mm
Weight:	7.5kg
Interface:	USB 3.0
Power Supply:	DC24V